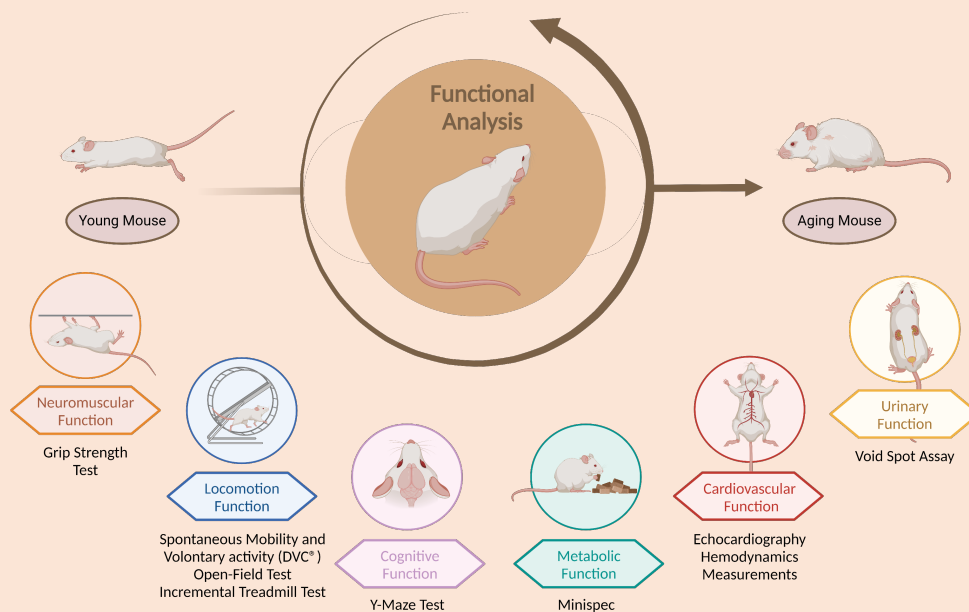


The **Functional Phenotyping Platform of Aging Mice** is a research facility that provides reliable approaches to assess age-related impairments and study biological age in mice. The IHU collaborates with the CREFRE of Toulouse to offer a dedicated space for experimentation on aging mice.

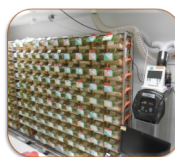


## Platform Objectives :

- Understand fundamental mechanisms of aging through phenotyping and early biomarkers analysis
- Assess the functional status of mice by cross-sectional or longitudinal studies
- Facilitate aging research for pre-clinical studies
- Analyze the impact of interventions, treatments or experimental conditions on the age-dependent functional decline
- To improve the reproducibility of aging studies

## Available device/apparatus :

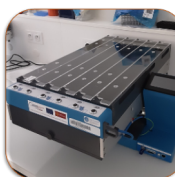
### At the CREFRE of Langlade :



- Four ventilated digital racks (DVC® racks) for the permanent recording of locomotor activity in the housing cage
- Running Wheel coupled with the DVC® system
- Two Y-Maze apparatuses for the assessment of working memory



- Two Grip Strength test with two or four limbs (grid or bar)
- Four circular arenas of 40 centimeters in diameter for the study of anxiety and locomotion + Video-tracking (Ethovision software)
- Two treadmills with six lanes for mice



### At the CREFRE of Rangueil :

- VEVO echocardiography station for the analysis of hemodynamics on anesthetized mice
- Minispec device for the study of body composition on awake mice